

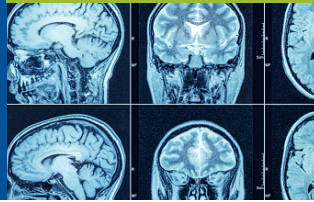


Duke Skull Base Center

Internationally recognized for its leadership in diagnosing and treating cerebrospinal fluid (CSF) leaks



World-renowned team uses advanced imaging to locate CSF leaks and guide repairs.



Pioneered novel flap techniques to minimize morbidity and enhance recovery.

Overview

The Duke Skull Base Center at Duke Health is internationally recognized for its leadership in diagnosing and treating cerebrospinal fluid (CSF) leaks. It offers a comprehensive, multidisciplinary approach that integrates management of the underlying cause with advanced surgical techniques and cutting-edge imaging to ensure optimal outcomes with low recurrence rates.

Key Capabilities

Advanced Surgical Techniques: Repair skull base defects with low recurrence rates.

Innovative Reconstruction: Pioneered novel flap techniques to minimize morbidity and enhance recovery.

Comprehensive Screening: Evaluates for conditions like increased intracranial pressure and transverse sinus stenosis using magnetic resonance venography (MRV) and venous sinus pressure monitoring using cerebral venogram.

Minimally Invasive Interventions: Includes catheter-based stenting of cerebral venous stenosis and autologous blood injections for spinal CSF leaks.

Diagnostic & Treatment Highlights

Neuroradiology: World-renowned team uses advanced imaging to locate CSF leaks, detect underlying causes such transverse sinus stenosis and increased intracranial hypertension and guide repairs.

Neuro-ophthalmology: Assesses optic nerves and visual fields to prevent vision loss from elevated CSF pressure.

Multidisciplinary Team

Patients benefit from seamless access to:

- Dedicated skull base nurse navigators to facilitate patient access and care delivery
- Otolaryngologists with special training in rhinology and neurotology
- Skull base specialists
- Neuroradiologists
- Neurovascular neurosurgeons
- Neuro-ophthalmologists

Pre-Consultation Requirements:

- Referral (preferably from a Neurologist, ENT, or Neurosurgeon, or family physician/PCP)
- MRI of the brain with and without contrast, CT scan of the sinuses without contrast performed within the last 6 to 12 months - We MUST have images on a CD mailed to our office, the report is not sufficient. *Imaging can be shared electronically through PowerShare*
- Copies of clinic notes, and imaging reports related to your symptoms (Can be faxed to 919-684-9108)
- Copy of front and back of insurance card
- CT Myelogram/MRI brain: (not required, but must submit if performed)
- Beta 2 transferrin results, if available



DukeHealth

To refer a patient, call Duke's Consultation and Referral Center at 919-681-9928 or log into Duke MedLink.